



Draw the hour and minute hand on the clock so it represents the time shown.

1) 1:05



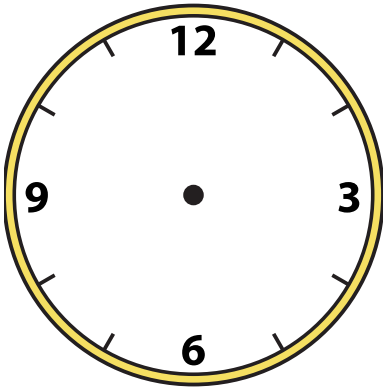
2) 6:15



3) 2:25



4) 5:25



5) 12:25



6) 6:30



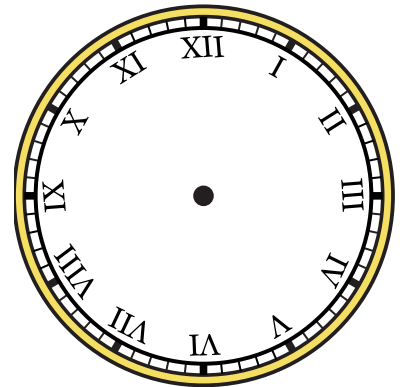
7) 7:35



8) 10:25



9) 1:35





Draw the hour and minute hand on the clock so it represents the time shown.

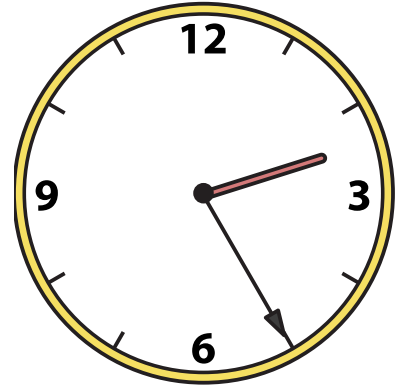
1) 1:05



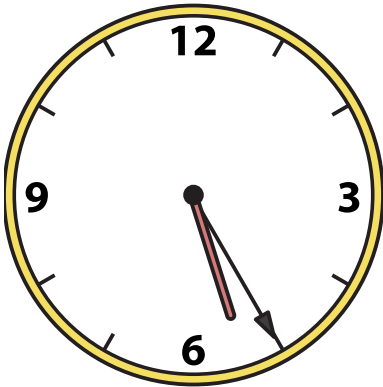
2) 6:15



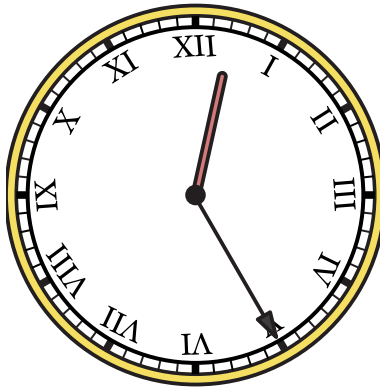
3) 2:25



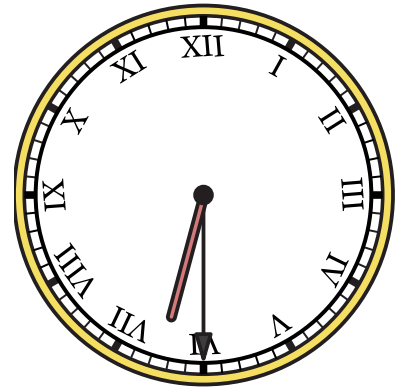
4) 5:25



5) 12:25



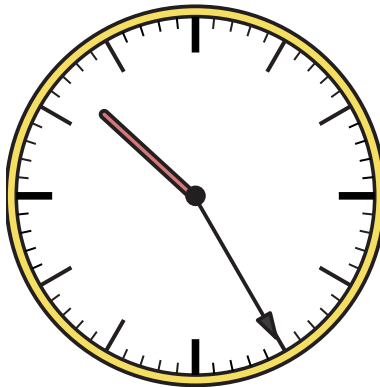
6) 6:30



7) 7:35



8) 10:25



9) 1:35

