

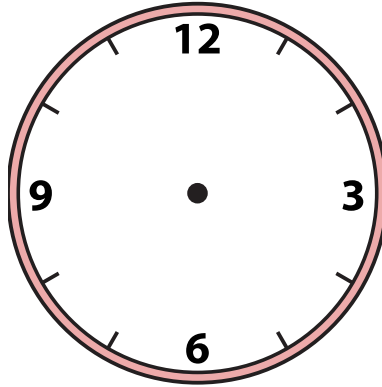


Draw the hour and minute hand on the clock so it represents the time shown.

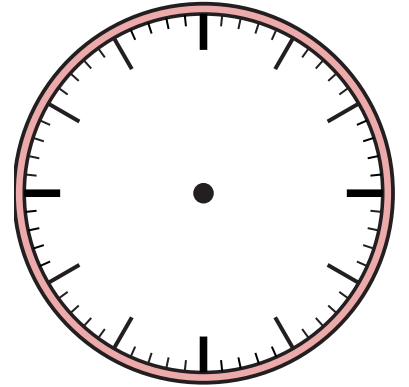
1) 2:11



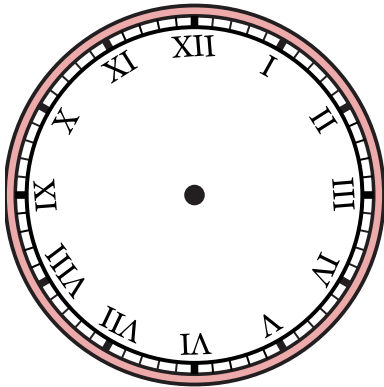
2) 3:29



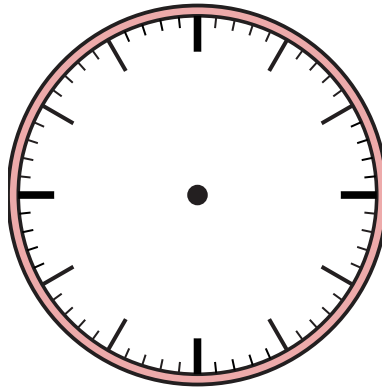
3) 3:18



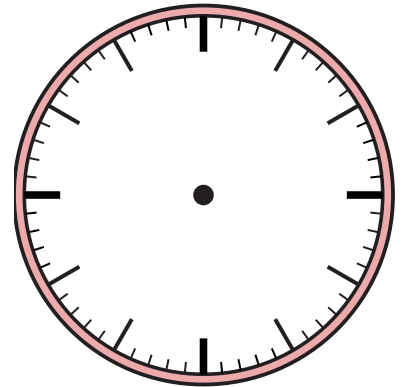
4) 6:05



5) 2:30



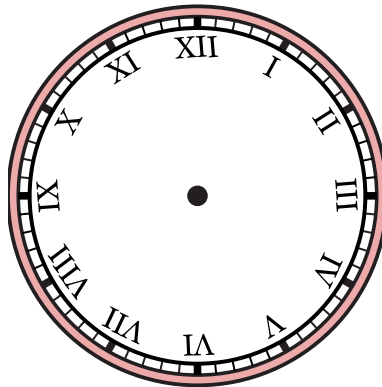
6) 10:59



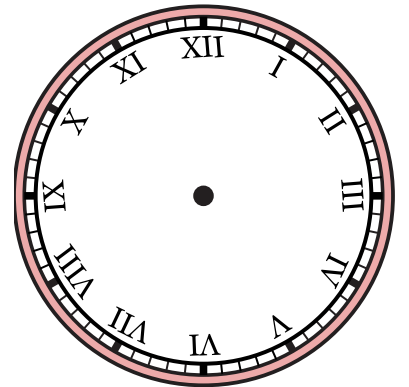
7) 8:10



8) 2:46



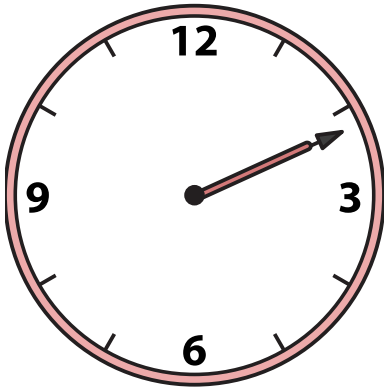
9) 1:49



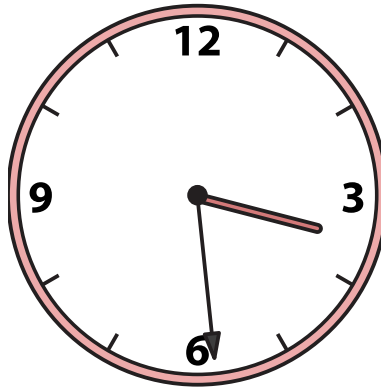


Draw the hour and minute hand on the clock so it represents the time shown.

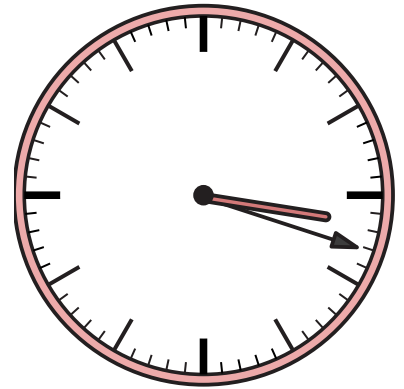
1) 2:11



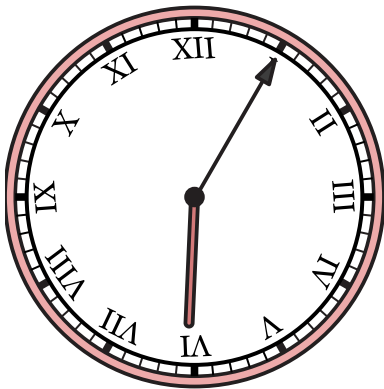
2) 3:29



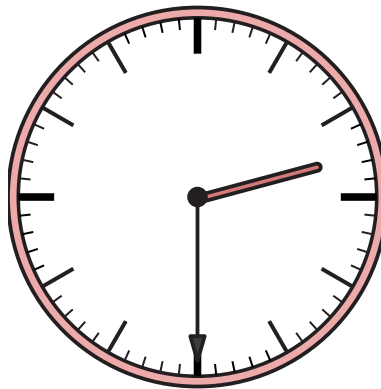
3) 3:18



4) 6:05



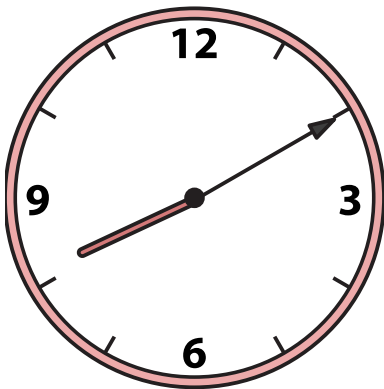
5) 2:30



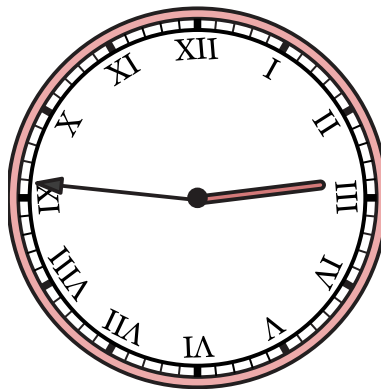
6) 10:59



7) 8:10



8) 2:46



9) 1:49

