

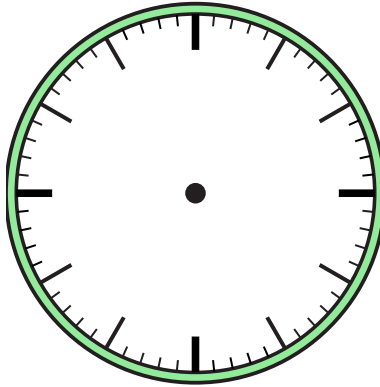


Draw the hour and minute hand on the clock so it represents the time shown.

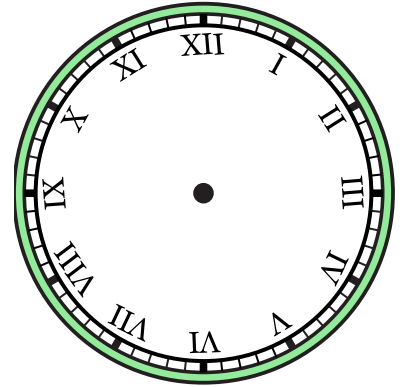
1) 6:30



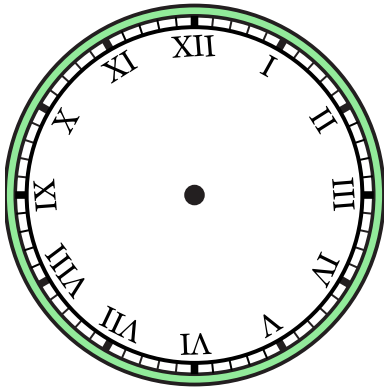
2) 9:00



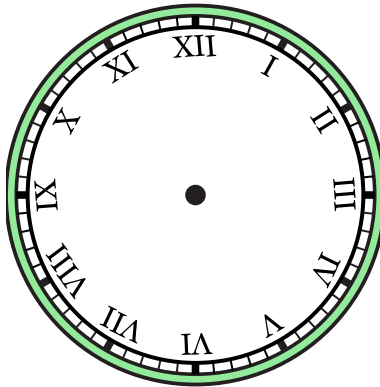
3) 3:00



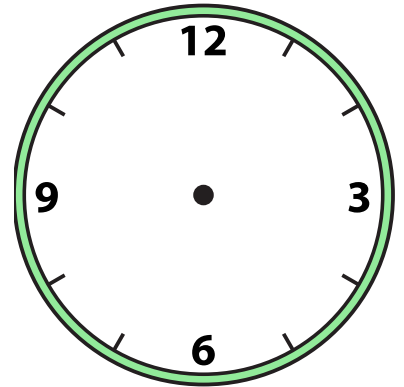
4) 8:00



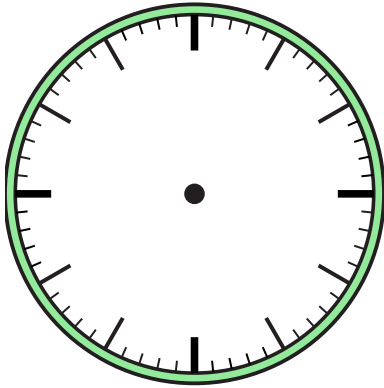
5) 9:30



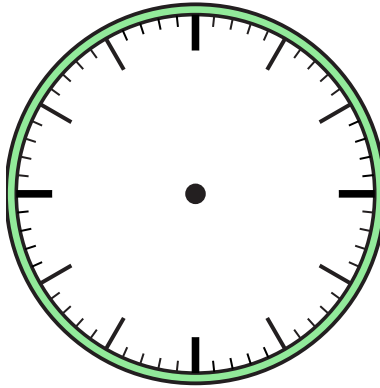
6) 6:00



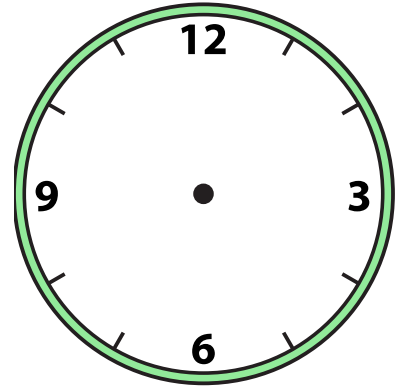
7) 10:00



8) 11:30



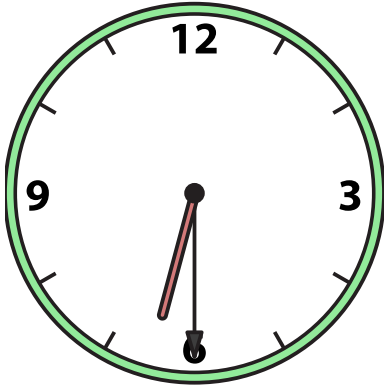
9) 7:30



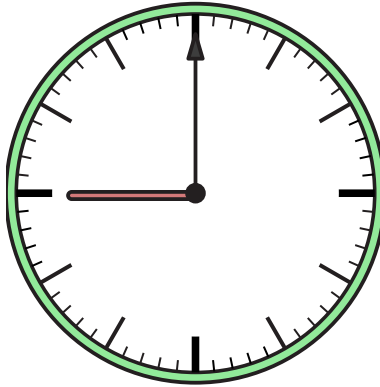


Draw the hour and minute hand on the clock so it represents the time shown.

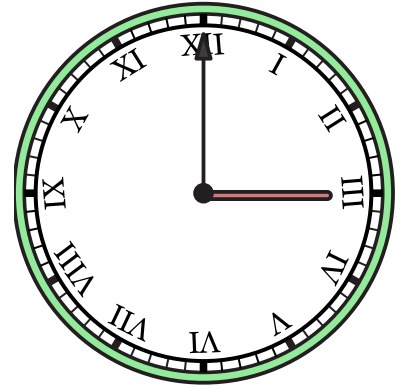
1) 6:30



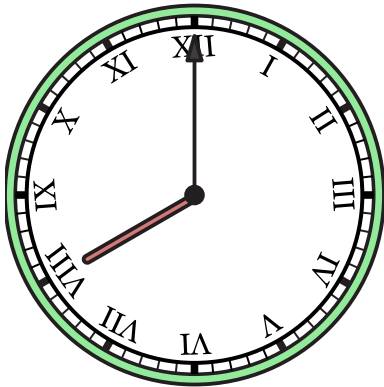
2) 9:00



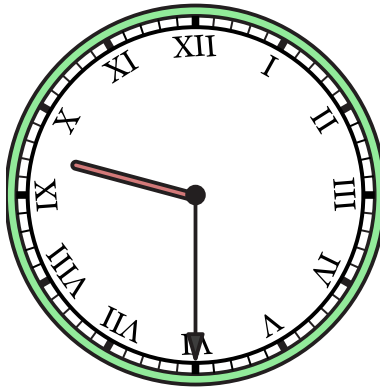
3) 3:00



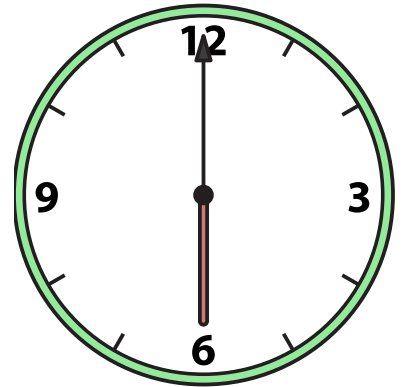
4) 8:00



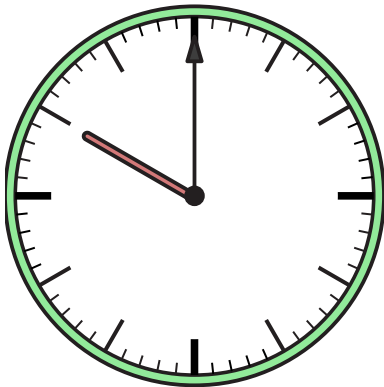
5) 9:30



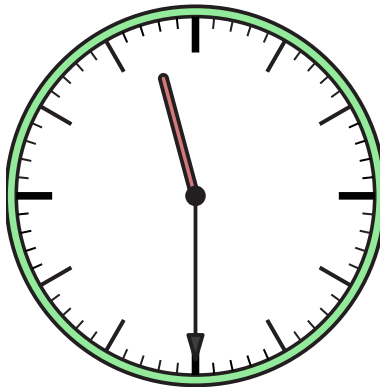
6) 6:00



7) 10:00



8) 11:30



9) 7:30

