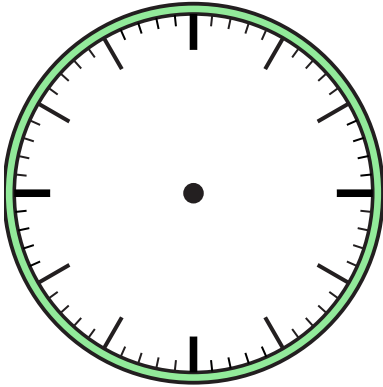


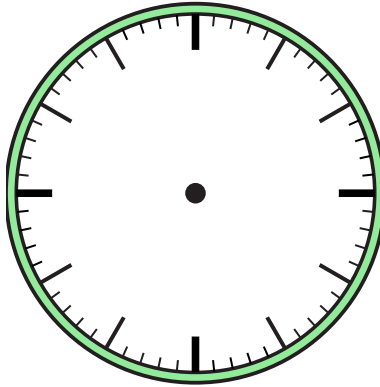


Draw the hour and minute hand on the clock so it represents the time shown.

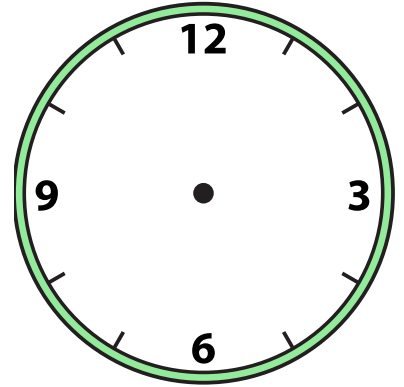
1) 11:30



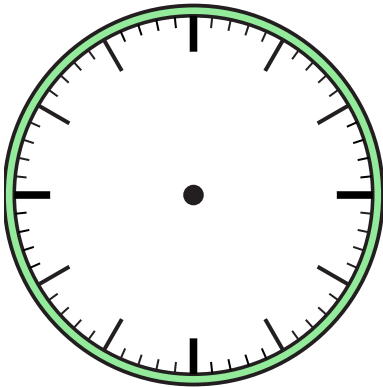
2) 7:00



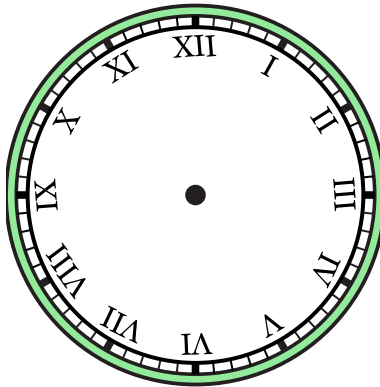
3) 8:00



4) 10:00



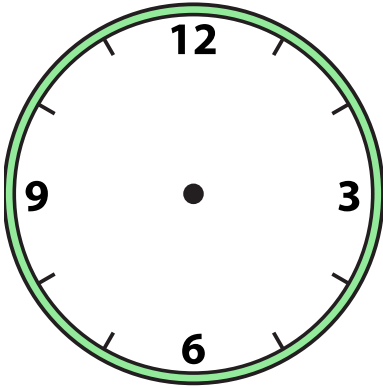
5) 2:30



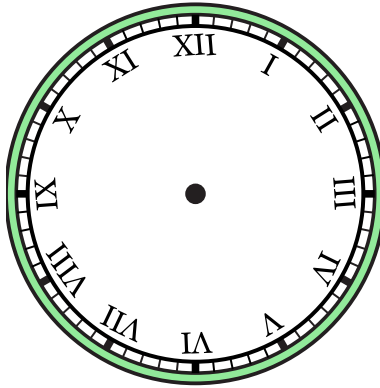
6) 2:00



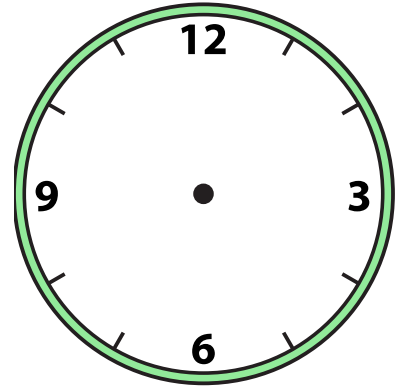
7) 12:30



8) 4:00



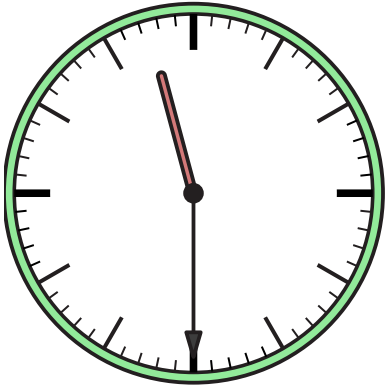
9) 12:30



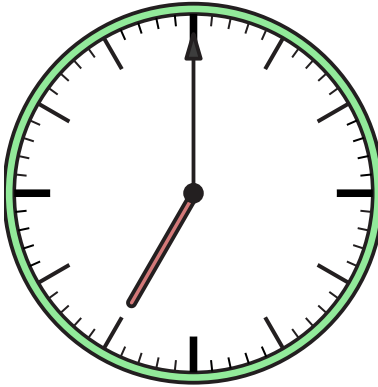


Draw the hour and minute hand on the clock so it represents the time shown.

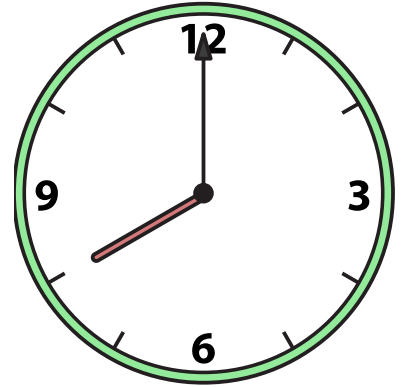
1) 11:30



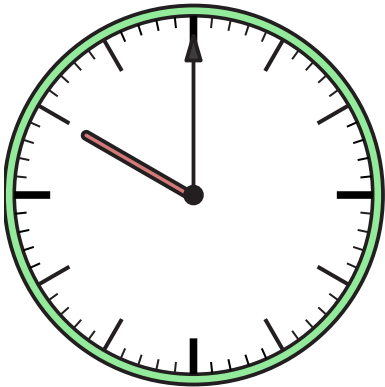
2) 7:00



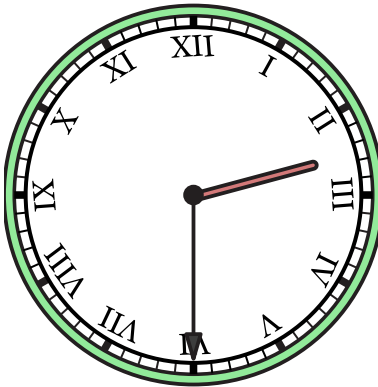
3) 8:00



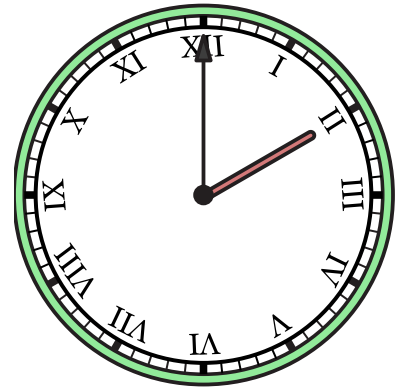
4) 10:00



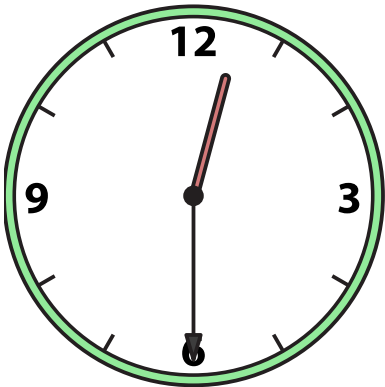
5) 2:30



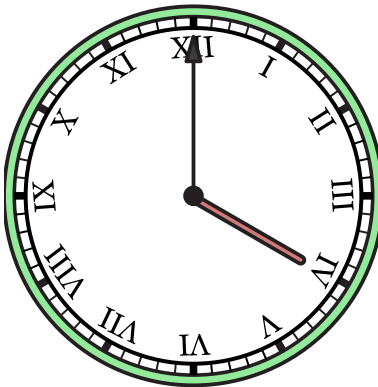
6) 2:00



7) 12:30



8) 4:00



9) 12:30

