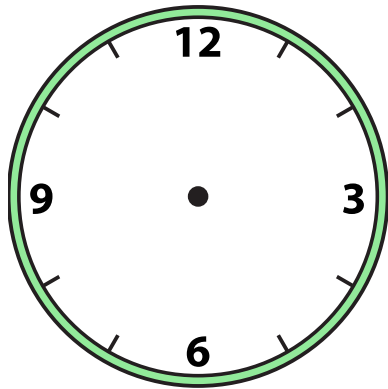




Draw the hour and minute hand on the clock so it represents the time shown.

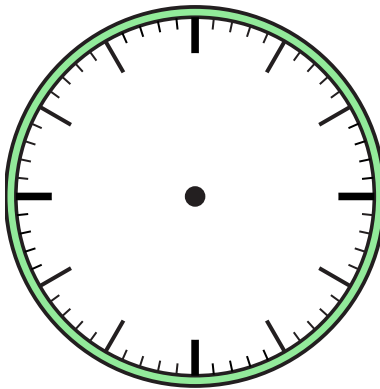
1)

12:30



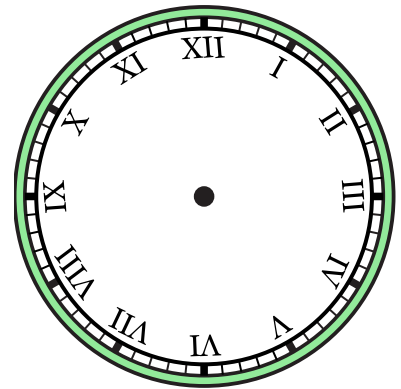
2)

3:30



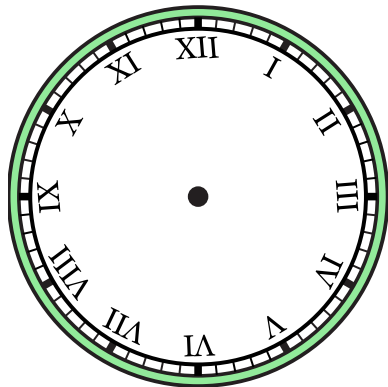
3)

10:00



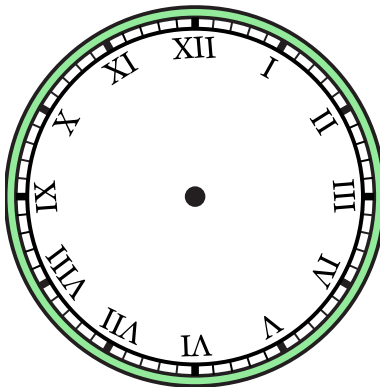
4)

1:00



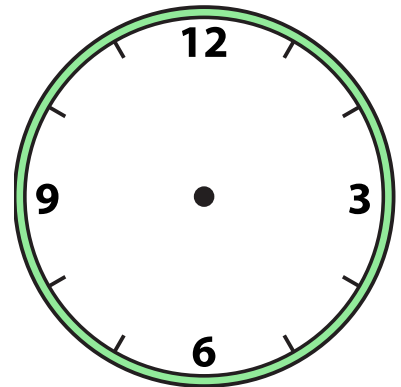
5)

2:00



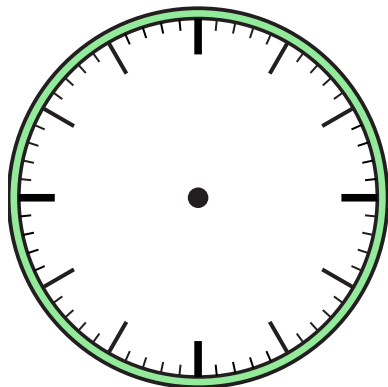
6)

12:30



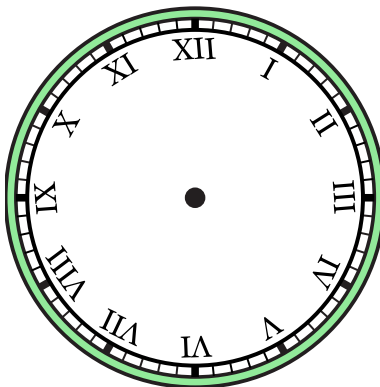
7)

5:30



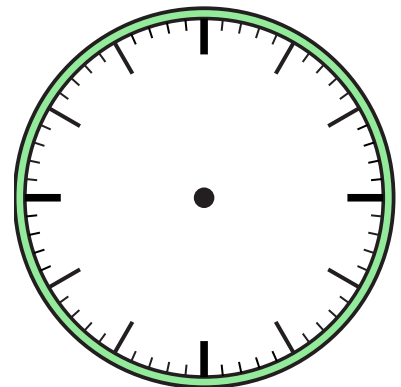
8)

9:30



9)

10:30

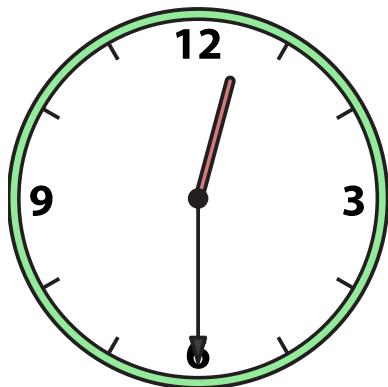




Draw the hour and minute hand on the clock so it represents the time shown.

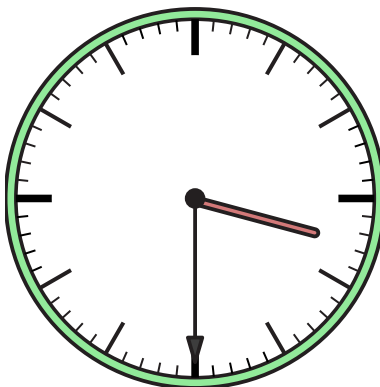
1)

12:30



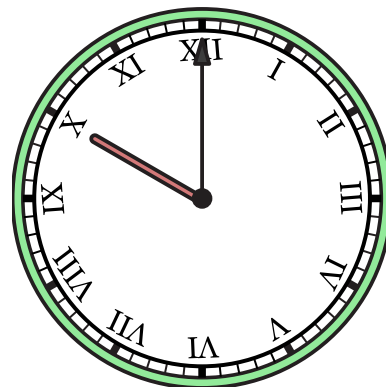
2)

3:30



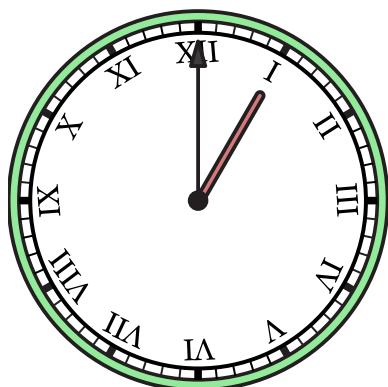
3)

10:00



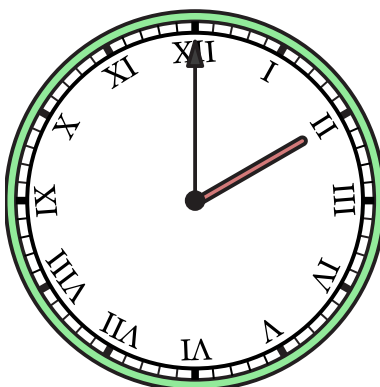
4)

1:00



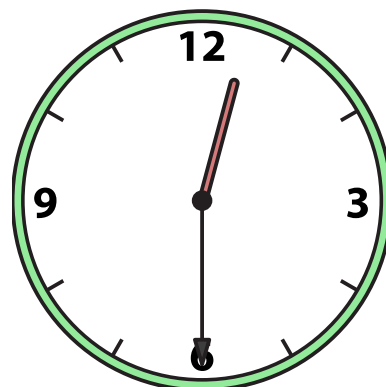
5)

2:00



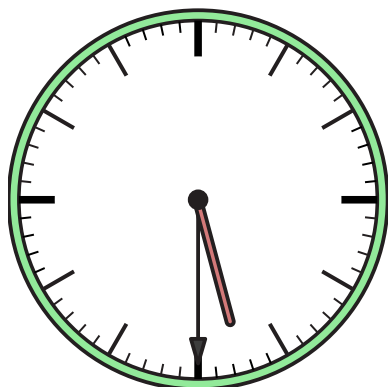
6)

12:30



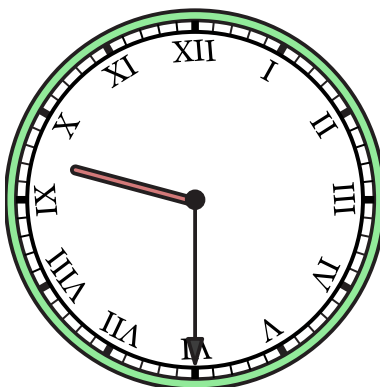
7)

5:30



8)

9:30



9)

10:30

