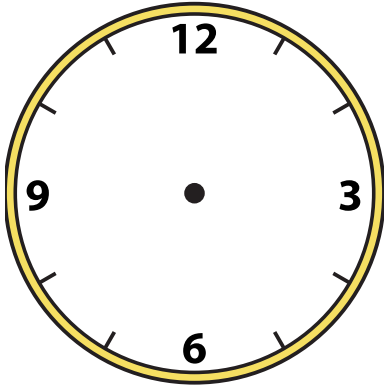


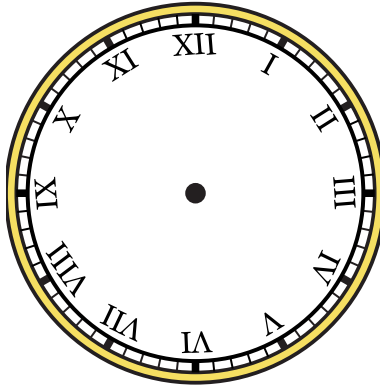


Draw the hour and minute hand on the clock so it represents the time shown.

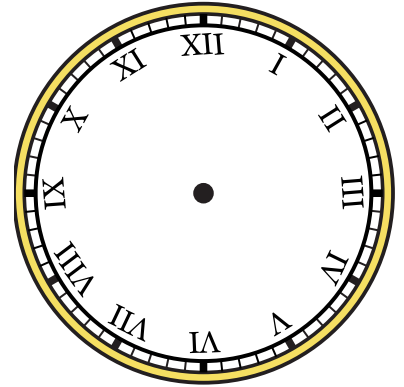
1) 3:45



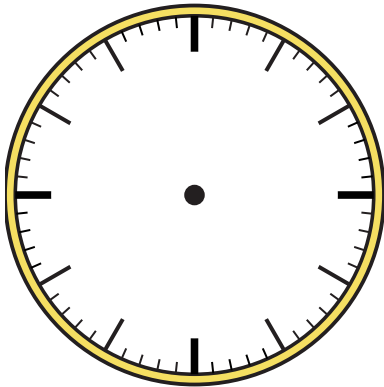
2) 5:30



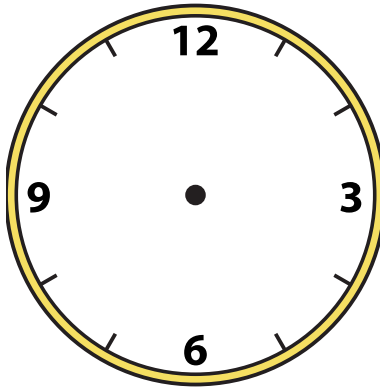
3) 5:45



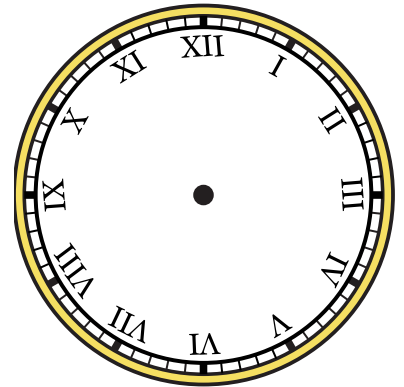
4) 5:00



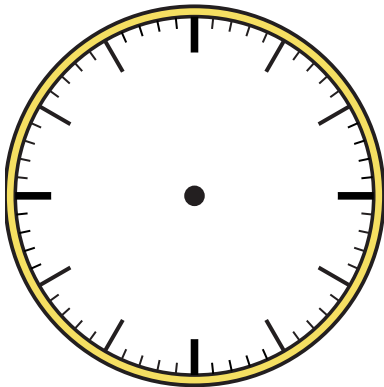
5) 12:30



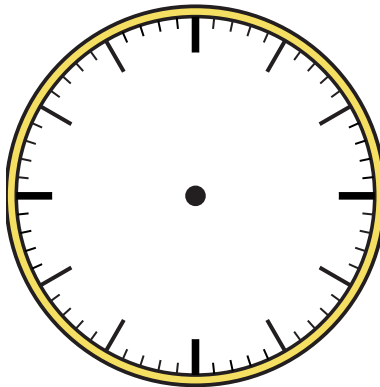
6) 4:00



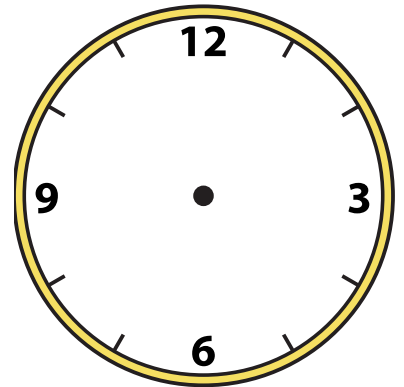
7) 8:00



8) 12:45



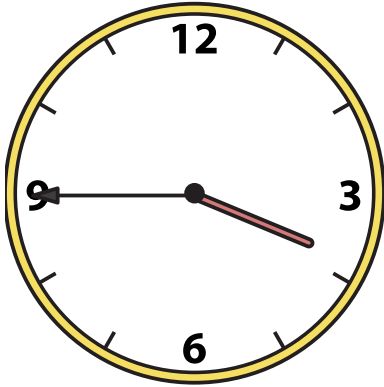
9) 6:30



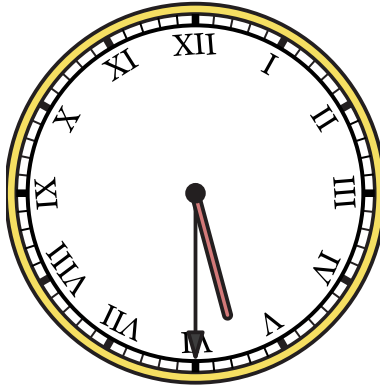


Draw the hour and minute hand on the clock so it represents the time shown.

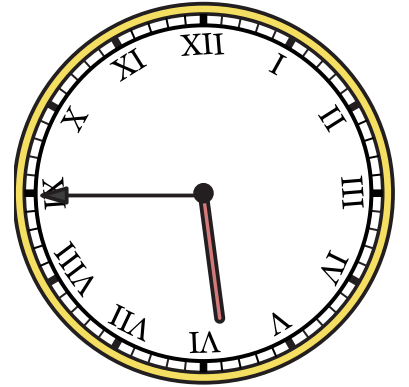
1) 3:45



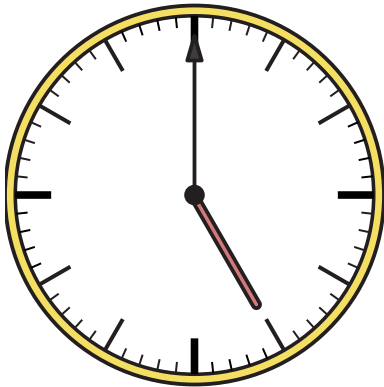
2) 5:30



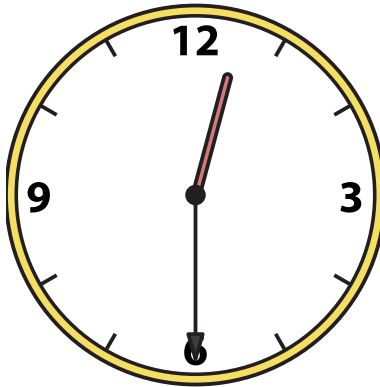
3) 5:45



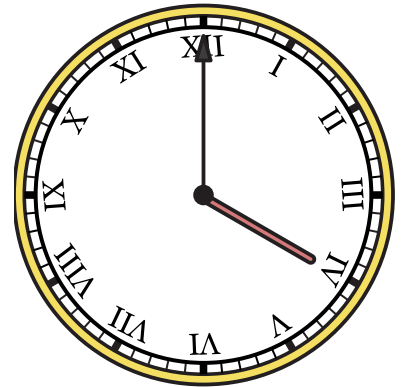
4) 5:00



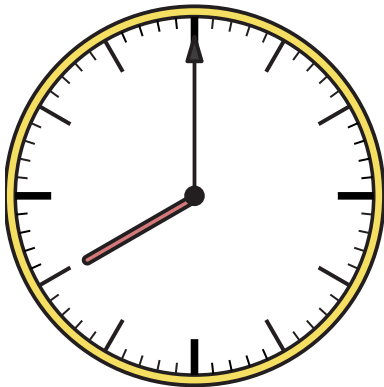
5) 12:30



6) 4:00



7) 8:00



8) 12:45



9) 6:30

