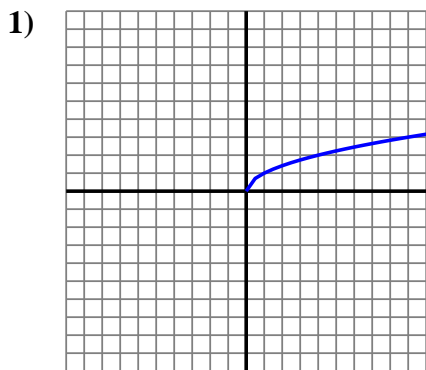


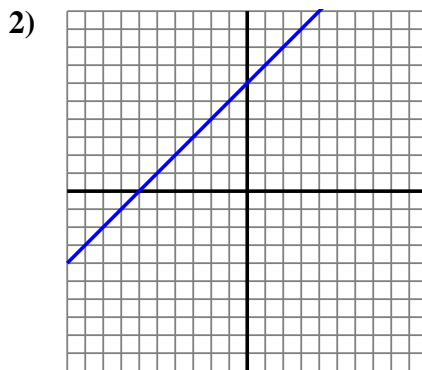


Determine if the graph shown represents a linear function (yes) or not (no).

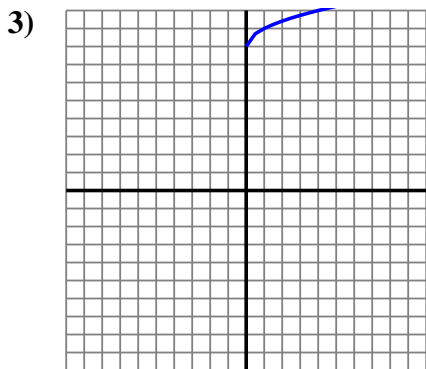
Answers



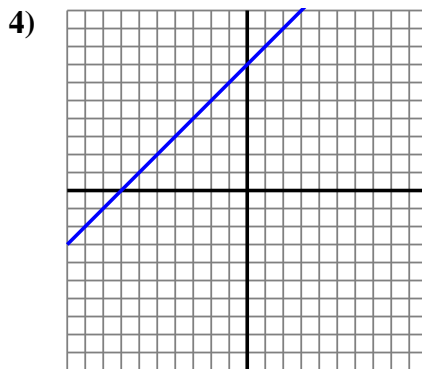
$Y = \sqrt{X}$



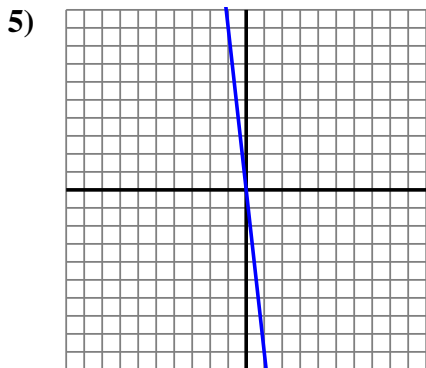
$Y = 6 + X$



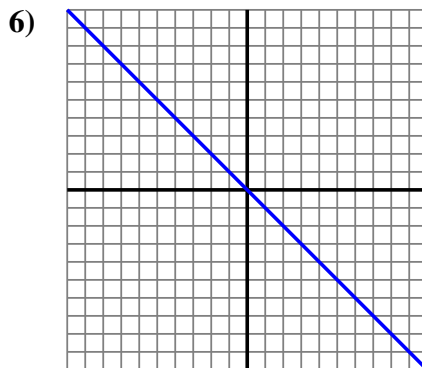
$Y = \sqrt{X} + 8$



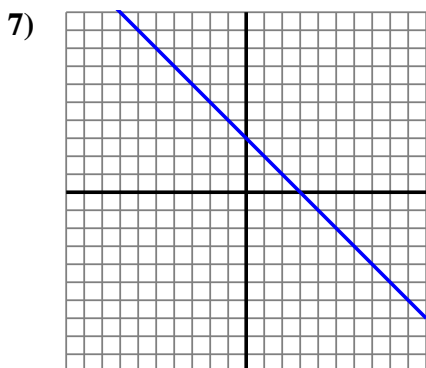
$Y = X + 7$



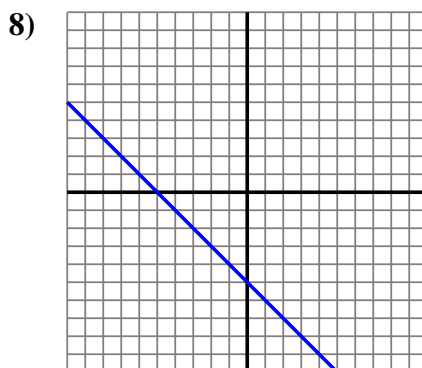
$Y = -X + 9$



$Y = -X$



$Y = -X + 3$

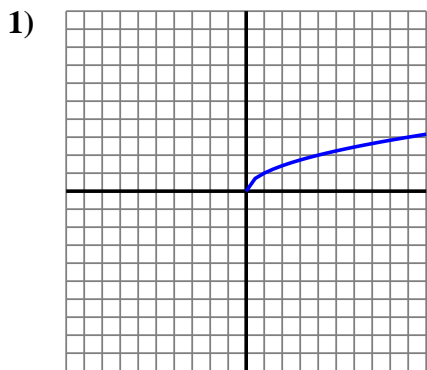


$Y = -X - 5$

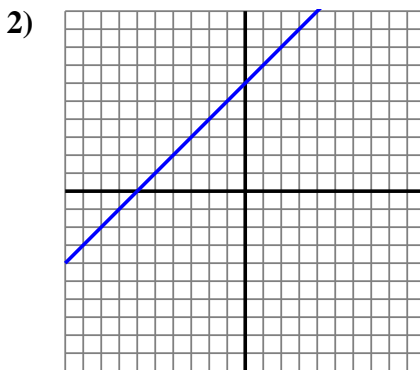
1. \_\_\_\_\_
2. \_\_\_\_\_
3. \_\_\_\_\_
4. \_\_\_\_\_
5. \_\_\_\_\_
6. \_\_\_\_\_
7. \_\_\_\_\_
8. \_\_\_\_\_



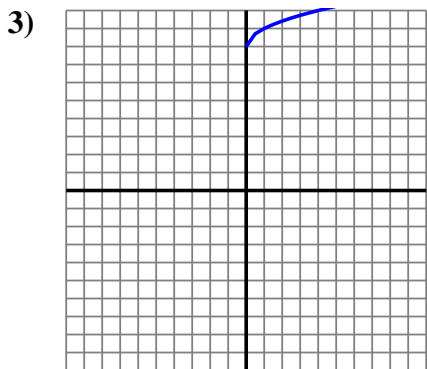
Determine if the graph shown represents a linear function (yes) or not (no).



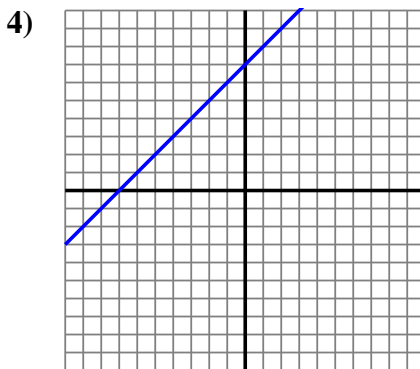
$Y = \sqrt{X}$



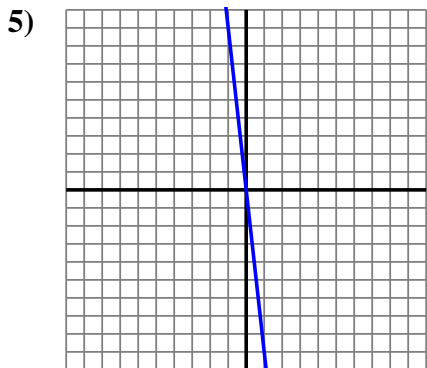
$Y = 6 + X$



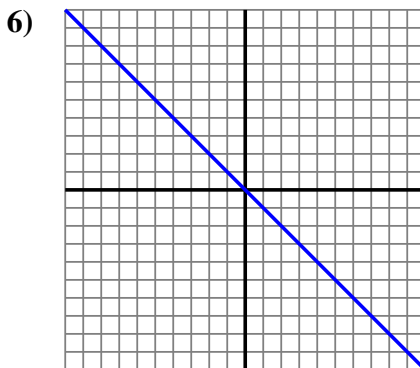
$Y = \sqrt{X} + 8$



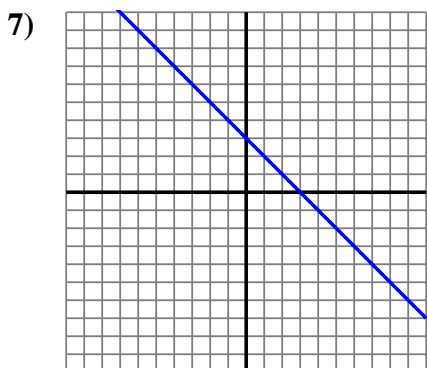
$Y = X + 7$



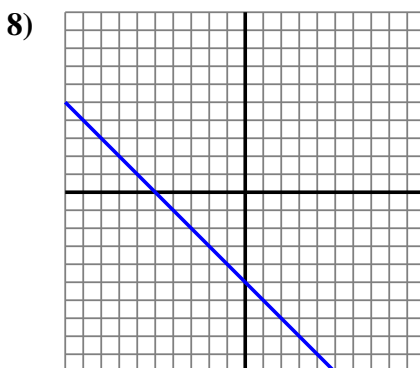
$Y = -X \times 9$



$Y = -X$



$Y = -X + 3$



$Y = -X - 5$

Answers

1. no

2. yes

3. no

4. yes

5. yes

6. yes

7. yes

8. yes