



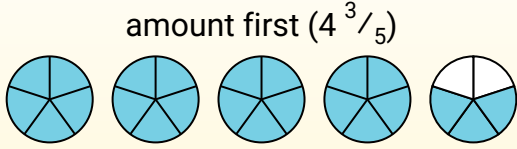
Subtracting Mixed Fractions (visual)

Name: _____

Use the visual model to solve each problem.

$$4\frac{3}{5} - 2\frac{4}{5} = ?$$

To solve a fraction subtraction problem one strategy is to shade in the starting amount first ($4\frac{3}{5}$)



Next mark off the wholes (2).



Finally mark off the fraction $\frac{4}{5}$.



Now we can see that $4\frac{3}{5} - 2\frac{4}{5} = 1\frac{4}{5}$

Answers

1. _____
2. _____
3. _____
4. _____
5. _____
6. _____
7. _____
8. _____
9. _____
10. _____

1) $5\frac{2}{5} - 3\frac{1}{5} =$

2) $4\frac{1}{6} - 1\frac{2}{6} =$

3) $6\frac{1}{6} - 3\frac{3}{6} =$

4) $3\frac{1}{10} - 1\frac{5}{10} =$

5) $6\frac{2}{5} - 1\frac{2}{5} =$

6) $3\frac{3}{6} - 1\frac{2}{6} =$

7) $3\frac{1}{10} - 1\frac{1}{10} =$

8) $3\frac{1}{3} - 1\frac{2}{3} =$

9) $3\frac{2}{6} - 1\frac{5}{6} =$

10) $5\frac{1}{10} - 3\frac{2}{10} =$



Subtracting Mixed Fractions (visual)

Name: **Answer Key**

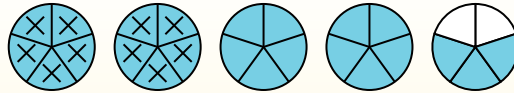
Use the visual model to solve each problem.

$$4\frac{3}{5} - 2\frac{4}{5} = ?$$

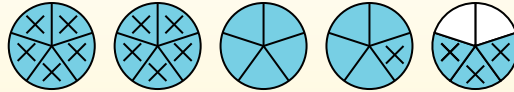
To solve a fraction subtraction problem one strategy is to shade in the starting amount first ($4\frac{3}{5}$)



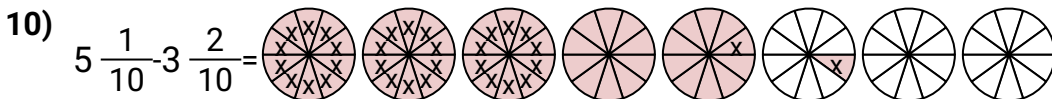
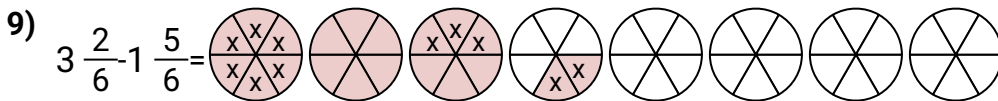
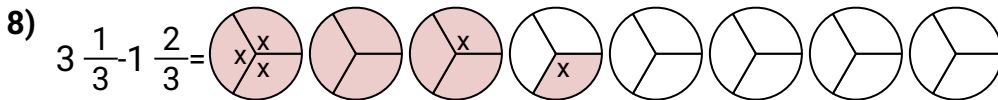
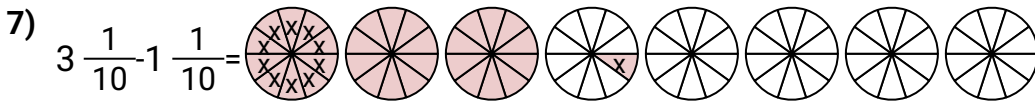
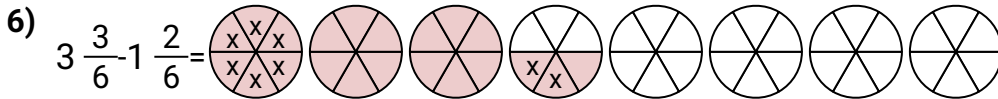
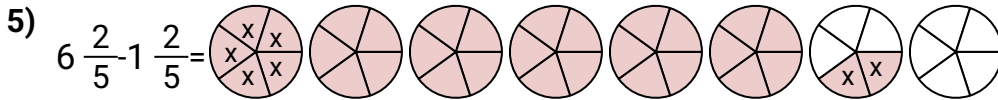
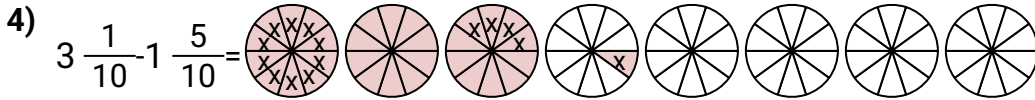
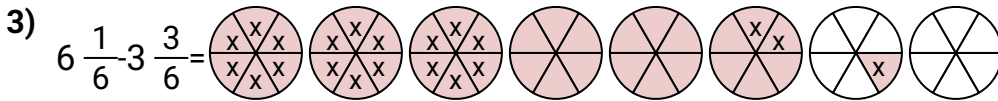
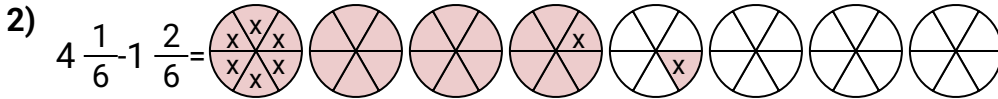
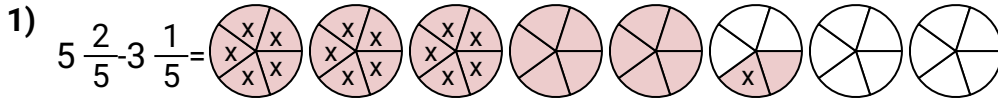
Next mark off the wholes (2).



Finally mark off the fraction $\frac{4}{5}$.



Now we can see that $4\frac{3}{5} - 2\frac{4}{5} = 1\frac{4}{5}$



Answers

1. $\frac{11}{5}$
2. $\frac{17}{6}$
3. $\frac{16}{6}$
4. $\frac{16}{10}$
5. $\frac{25}{5}$
6. $\frac{13}{6}$
7. $\frac{20}{10}$
8. $\frac{5}{3}$
9. $\frac{9}{6}$
10. $\frac{19}{10}$