



Determine which letter best represents the weight.

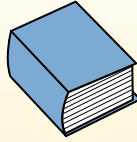
Gram (g)

A gram is about the weight of a paperclip.



Kilogram (kg)

A kilogram is about the weight of a thick book.



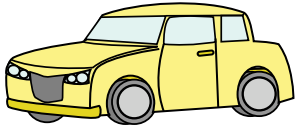
Remember:

Kilo means 1,000. So a kilogram is 1,000 grams.
1 Kilogram is also about the same weight as 2 pounds.

Answers

1. _____
2. _____
3. _____
4. _____
5. _____
6. _____
7. _____
8. _____
9. _____

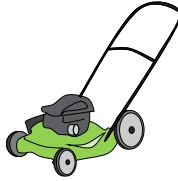
1)



Car

- A. 15 grams
- B. 2000 kilograms
- C. 6000 grams
- D. 2 kilograms

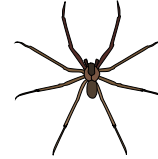
2)



Lawn Mower

- A. 500 grams
- B. 22 kilograms
- C. 200 grams
- D. 100 kilograms

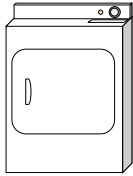
3)



Spider

- A. 1 gram
- B. 500 grams
- C. 15 grams
- D. 1 kilogram

4)



Clothes Dryer

- A. 60 grams
- B. 3 grams
- C. 60 kilograms
- D. 3 kilograms

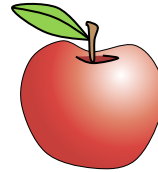
5)



Pen

- A. 500 grams
- B. 5000 grams
- C. 5 grams
- D. 5 kilograms

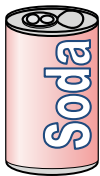
6)



Apple

- A. 5 kilograms
- B. 200 kilograms
- C. 200 grams
- D. 5 grams

7)



Can of Soda

- A. 1 gram
- B. 250 grams
- C. 500 kilograms
- D. 2 kilograms

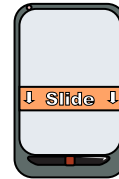
8)



Battery

- A. 1 gram
- B. 15 grams
- C. 10 kilograms
- D. 90 kilograms

9)



Phone

- A. 500 grams
- B. 5 grams
- C. 15 kilograms
- D. 500 kilograms



Determine which letter best represents the weight.

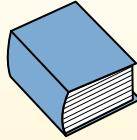
Gram (g)

A gram is about the weight of a paperclip.



Kilogram (kg)

A kilogram is about the weight of a thick book.

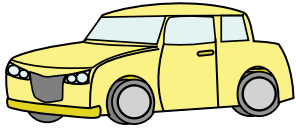


Remember:

Kilo means 1,000. So a kilogram is 1,000 grams.
1 Kilogram is also about the same weight as 2 pounds.

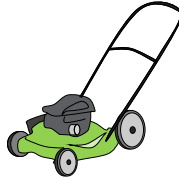
Answers

1)



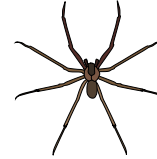
- Car
- A. 15 grams
 - B. 2000 kilograms
 - C. 6000 grams
 - D. 2 kilograms

2)



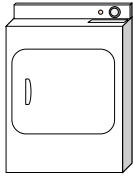
- Lawn Mower
- A. 500 grams
 - B. 22 kilograms
 - C. 200 grams
 - D. 100 kilograms

3)



- Spider
- A. 1 gram
 - B. 500 grams
 - C. 15 grams
 - D. 1 kilogram

4)



- Clothes Dryer
- A. 60 grams
 - B. 3 grams
 - C. 60 kilograms
 - D. 3 kilograms

5)



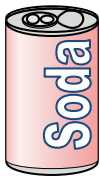
- Pen
- A. 500 grams
 - B. 5000 grams
 - C. 5 grams
 - D. 5 kilograms

6)



- Apple
- A. 5 kilograms
 - B. 200 kilograms
 - C. 200 grams
 - D. 5 grams

7)



- Can of Soda
- A. 1 gram
 - B. 250 grams
 - C. 500 kilograms
 - D. 2 kilograms

8)



- Battery
- A. 1 gram
 - B. 15 grams
 - C. 10 kilograms
 - D. 90 kilograms

9)



- Phone
- A. 500 grams
 - B. 5 grams
 - C. 15 kilograms
 - D. 500 kilograms

- 1. **B**
- 2. **B**
- 3. **A**
- 4. **C**
- 5. **C**
- 6. **C**
- 7. **B**
- 8. **B**
- 9. **A**